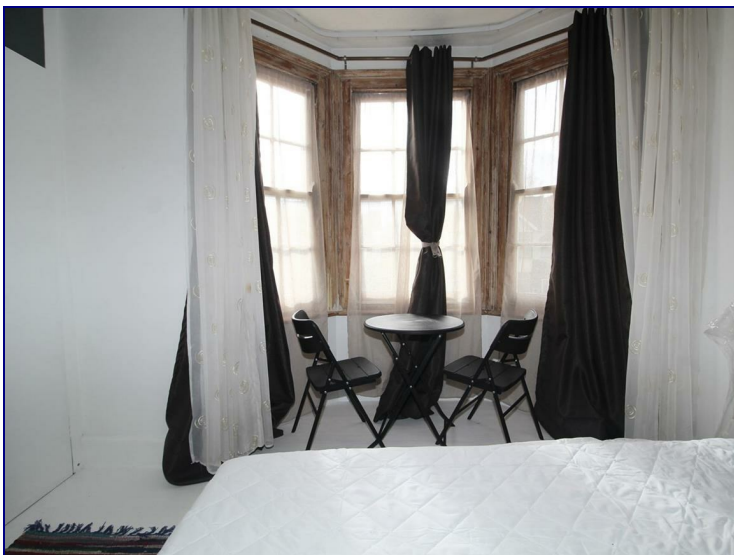


Southbury Road, Enfield, EN1 1YF



£800 PCM


Furnished Double Room to Let - House Share.

****All Bills Included****

Available Now.

Occupants will benefit from a furnished double room with fitted wardrobes. Additionally tenants will have access to a shared kitchen with appliances, great size lounge, downstairs WC garden and upstairs modern three piece bathroom suite.



Energy Efficiency Rating		
	Current	Potential
<i>Very energy efficient - lower running costs</i>		
(92 plus) A		
(81-91) B		
(69-80) C		
(55-68) D		
(39-54) E		
(21-38) F		
(1-20) G		
<i>Not energy efficient - higher running costs</i>		
England & Wales	EU Directive 2002/91/EC	

Environmental Impact (CO ₂) Rating		
	Current	Potential
<i>Very environmentally friendly - lower CO2 emissions</i>		
(92 plus) A		
(81-91) B		
(69-80) C		
(55-68) D		
(39-54) E		
(21-38) F		
(1-20) G		
<i>Not environmentally friendly - higher CO2 emissions</i>		
England & Wales	EU Directive 2002/91/EC	